

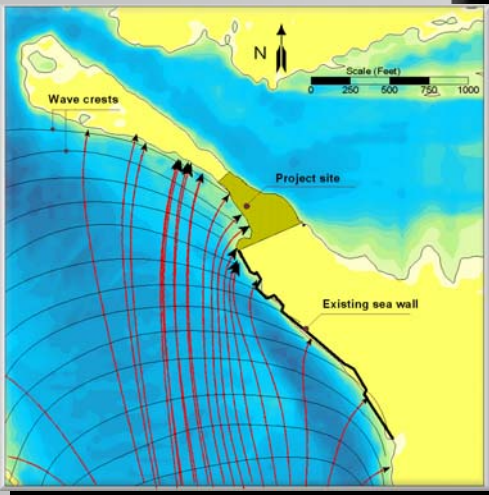
NORRIEGO POINT EROSION CONTROL PROJECT EAST PASS, OKALOOSA COUNTY, FLORIDA



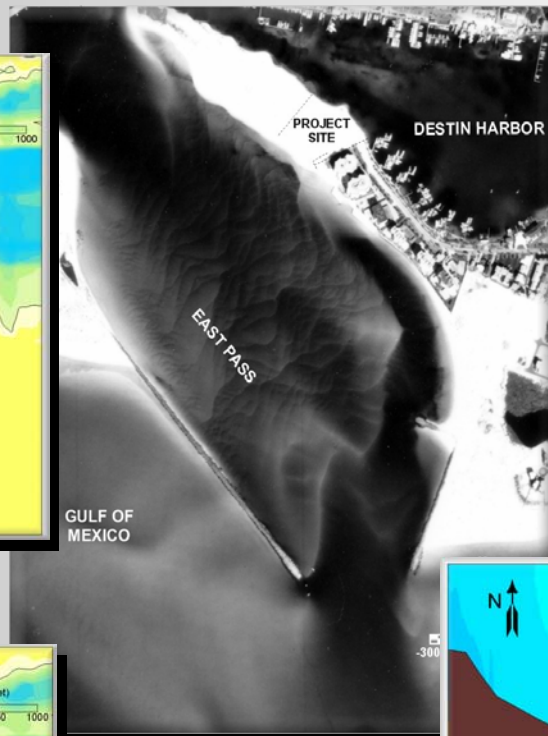
COASTAL PROCESSES MODELING

Norriego Point has been subjected to progressive erosion and occasional breaching. This study was performed to identify the erosion problem and provide an effective erosion control design. This study examined the coastal processes within East Pass and the impacts of the adjacent coastal structures to identify the main reasons of the persistent erosion problem at the project site. The study included detailed wave refraction modeling and interpretation of the resulting sediment transport patterns and the associated shoreline planforms. The study also examined the effectiveness of the proposed structures designed to protect the project site and stabilize the adjacent beaches.

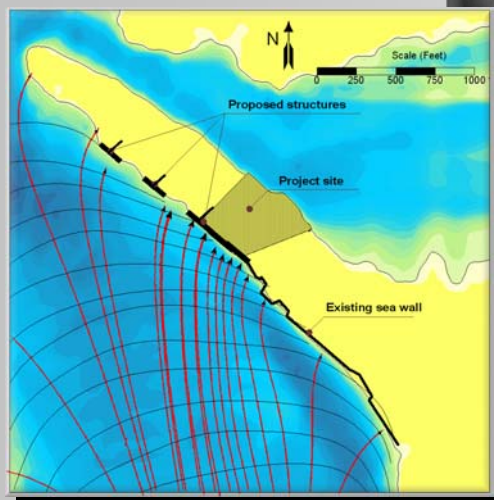
- **WAVE REFRACTION MODELING**



Post-storm conditions

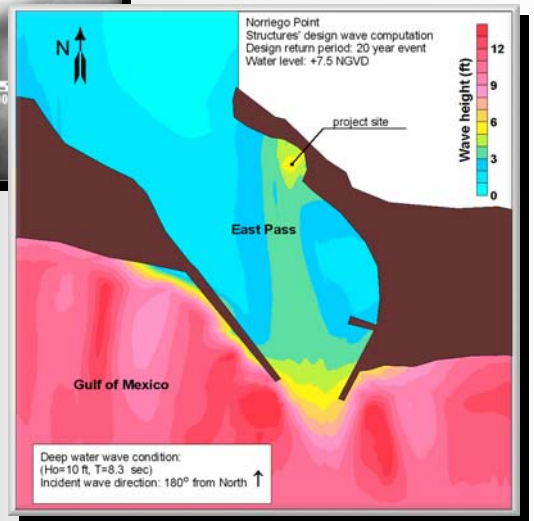


Aerial view of the project site



Proposed design

- **DESIGN WAVE HEIGHT COMPUTATION**



TECHNICAL REFERENCE

Humiston and Moore (2000) "Norriego Point Erosion control Project: Coastal Processes Modeling and Analysis" Technical Report.